

# AmLotus

*Language Of The United States*

**A Premier Private Language School in Manhattan, New York  
Licensed by the State of New York, New York State Education Department  
[www.amlotus.edu](http://www.amlotus.edu)**



Accredited by



**CEA**

**CTAS**

ETS Certified Test Administration Site

**AmLotus LLC is authorized under Federal  
law to enroll F nonimmigrant alien students.**



*Volume 4. Updated in March 2020*

# The Key to International Communication



## Welcome to AmLotus

We have an excellent reputation for quality English language teaching in a professional and caring environment.

## Meaning Of AmLotus

- ▶ **Am = America, Ambitious, Ante Meridiem(A.M)**
- ▶ **Lotus = The lotus flower appears in a legend originating from ancient Egypt. The flower is a symbol of the sun and creation. The pure lotus flower emerges from the depths of the muddy swamp at dawn before the sun arises.**

AmLotus will always be here to help you (The Lotus) fulfill your ambitions and accomplish your goals in America. We will be there from your first meeting with us in the morning (A.M.) until you bloom.

## Mission Statement

Amlotus, LLC, is committed to providing high-quality English instruction in the form of ESL, TOEFL classes, and tutoring in Language Arts, as well as EFL/ESL Teacher Training. We strive to assist students in their academic, cultural, linguistic and professional development so that they will be able to be successful in their endeavors. We provide a supportive and positive work environment in order to attract and retain teachers and support staff of the highest caliber. We encourage the use of a variety of teaching styles, modern technology, and experiences outside of the classroom to meet the needs of students with different learning styles from different backgrounds. We seek to provide an enriching, professional, and comfortable environment for our students to learn and socialize in, and we offer a plethora of student services to assist our students with any issues they may encounter, whether those concerns are of an academic or personal nature.

## Academic Calendar

Amlotus programs run all year and utilize the academic calendar of semesters. Each session lasts 15 weeks. All new courses are open dependent on student enrollment. Minimum 5 students in enrollment are required to open a new course. Applicants may consult with a school agent to determine the next scheduled starting date.

### ▶ 2025

Quarter	Start Date	End Date	Quarter	Start Date	End Date
Winter 1	12/30/2024	04/13/2025	Summer 1	06/23/2025	10/12/2025
Winter 2	02/03/2025	05/18/2025	Summer 2	08/04/2025	11/16/2025
Spring 1	03/10/2025	06/22/2025	Fall 1	09/08/2025	12/21/2025
Spring 2	04/14/2025	07/27/2025	Fall 2	10/14/2025	02/01/2026
Spring 3	05/19/2025	09/07/2025	Fall 3	11/17/2025	03/08/2026

The school closes on the following holidays:

- New Year's Day
- Martin Luther King Day
- President's Day
- Memorial Day
- Independence Day
- Labor Day
- Columbus Day
- Thanksgiving Weekend
- Christmas Day

## Class Schedule

<b>Weekday Class</b>	- 08:00 am ~ 11:30 am <b>M – Th</b> // 08:00 am ~ 12:00 pm <b>F</b> - 11:30 am ~ 04:00 pm <b>M – Th</b> - 05:30 pm ~ 09:00 pm <b>M – Th</b> // 05:00 pm ~ 09:00 pm <b>F</b>
<b>Weekend Class</b>	- 11:30 am ~ 05:30 pm <b>Th, F</b> // 09:00 am ~ 03:30 pm <b>Sat</b> (30 mins lunch time included) - 09:00 am ~ 06:30 pm <b>Sat &amp; Sun</b> (30 mins lunch time included)



# General English



## **ESL Literacy G / Intensive Speak-out 1 (Level 1)**

Literacy G and Intensive Speak-out 1 courses are designed to build foundational skills for nonnative speakers in American English, focusing on aural/ oral development. These courses help students develop their ability to understand and produce the basic sounds, vocabulary, and sentence patterns of American English.

<b>Pre-requisites</b>	<b>High School Diploma</b> <b>Qualifying score on Placement Test</b> <i>CaMLA EPT(0-26) / CaMLA Speaking (0-3) / CaMLA Writing (0-5) - Total Range (0 - 34)</i>
-----------------------	---

## **Beginning ESL G / Intensive Speak-out 2 (Level 2)**

Beginning ESL G and Intensive Speak-out 2 builds upon basic American English literacy through the development of listening, speaking, reading, and writing. Additional grammatical forms and communicative modes are studied. These courses further develop students' ability to understand and produce the basic sounds, vocabulary and sentence patterns of American English

<b>Pre-requisites</b>	<b>High School Diploma OR</b> <b>Qualifying score on Placement Test</b> <i>CaMLA EPT(27-40) / CaMLA Speaking (3-8) / CaMLA Writing (5-12) - Total Range (35 - 60)</i> <b>Completion of ESL Level 1</b>
-----------------------	---

## **Intermediate ESL G/ Intensive Speak-out 3 (Level 3)**

Intermediate ESL G and Intensive Speak-out 3 offer nonnative speakers intensive practice in listening, speaking, reading, and writing, as well as the study of grammatical structures and functions needed for increased fluency in writing and speaking. These courses develop students' ability to comprehend American English and students' use of spoken American English in a variety of settings, begin to apply knowledge of grammatical structures in both written and spoken American English, and actively engage in authentic texts in a variety of topics.

<b>Pre-requisites</b>	<b>High School Diploma</b> <b>Qualifying score on Placement Test OR</b> <i>CaMLA EPT(41-50) / CaMLA Speaking (8-12) / CaMLA Writing (12-18) - Total Range (61 - 80)</i> <b>Completion of ESL Level 2</b>
-----------------------	---

## **High Intermediate ESL G/ Intensive Speak-out 4**

High Intermediate ESL G and Intensive Speak-out 4 offer continued intensive practice in listening, speaking, reading, and writing. Increased emphasis on grammatical correctness in writing and speaking for success in daily life. These courses develop students' ability to comprehend American English, further develop students' use of spoken American English in a variety of settings, effectively apply knowledge of grammatical structures in both written and spoken American English, and expand students' ability to actively engage in authentic texts on a variety of topics.

<b>Pre-requisites</b>	<b>High School Diploma</b> <b>Qualifying score on Placement Test OR</b> <i>CaMLA EPT(51-61) / CaMLA level 3 Speaking (12-16) / CaMLA Writing (18-25) - Total Range (81 - 102)</i> <b>Completion of ESL Level 3</b>
-----------------------	---



### **Advanced ESL G/ Intensive Speak-out 5 (Level 5)**

Advanced ESL G and Intensive Speak-out 5 further develop students' ability to read and write fluently and coherently using standard American English and advanced grammatical forms and structures. Additionally, these courses further develops students' ability to listen and speak fluently and coherently using standard American English and advanced grammatical forms and structures.

<b>Pre-requisites</b>	<b>High School Diploma</b> <b>Qualifying score on Placement Test OR</b> <i>CaMLA EPT(62-68) / CaMLA Speaking (16-20) / CaMLA Writing (25-30) - <b>Total Range (103 - 118)</b></i> <b>Completion of ESL Level 4</b>
-----------------------	---

#### **General English Key Facts**

<b>Hours (per week)</b>	<b>18 hours per week</b>	<b>Material &amp; Book fee</b>	<b>\$40 / \$60 (Advanced ESL G)</b>
<b>Tuition</b>	<b>\$1,890 / 15 weeks</b>	<b>Course Features</b>	<b>Language Skill</b> <b>- Reading, Listening, Grammar, Vocabulary</b> <b>- Speaking Development</b> <b>- Essay Writing</b>

## Business English

### **Business English 1 (Level 3)**

Business English 1 introduces intermediate students to the workplace and business through vocabulary development, guided discussions, and writing. The goal of this course is to develop students' ability to understand and utilize business and workplace terminology to effectively communicate, orally and in written form, in a business setting.

<b>Pre-requisites</b>	<b>High School Diploma</b> <b>Qualifying score on Placement Test OR</b> <i>CaMLA EPT(41-50) / CaMLA Speaking (8-12) / CaMLA Writing (12-18) - <b>Total Range (61 - 80)</b></i> <b>Completion of Level 2</b>
-----------------------	--

### **Business English 2 (Level 4)**

Business English 2 improves the use of English in the workplace and business environment for high intermediate students through extensive vocabulary development, guided discussions, and writing. The goal of this course is to improve students' ability to recognize and effectively utilize business and workplace terminology to communicate, orally and in written form, in a business setting.

<b>Pre-requisites</b>	<b>High School Diploma</b> <b>Qualifying score on Placement Test OR</b> <i>- CaMLA EPT(51-61) / CaMLA Speaking (12-16) / CaMLA Writing (18-25) - <b>Total Range (81 - 102)</b></i> <b>Completion of ESL level 3</b>
-----------------------	--



### **Business English 3 (Level 5)**

Business English 3 continues to improve the use of English in the workplace and business environment for low advanced students through extensive vocabulary development, discussion, case study readings, and business correspondence. The goal of this course is to expand students' ability to effectively utilize business and workplace terminology to communicate, orally and in written form, with a wide range of structures and purposes, in a business setting.

<b>Pre-requisites</b>	<b>High School Diploma</b> <b>Qualifying score on Placement Test</b> <i>CaMLA EPT(62-68) / CaMLA Speaking (16-20) / CaMLA Writing (25-30) - Total Range (103 - 118)</i> <b>Completion of ESL Level 4</b>
-----------------------	---

### **Business English 4 (Level 6)**

Business English 4 continues to improve the use of English in the workplace and business environment for advanced students through extensive vocabulary development, negotiations and discussions, case study readings, and business correspondence. The goal of this course is to advance students' ability to effectively utilize business and workplace terminology to communicate, orally and in written form, with a wide range of structures and purposes, in a business setting.

<b>Pre-requisites</b>	<b>High School Diploma</b> <b>Qualifying score on Placement Test</b> <i>CaMLA EPT(69-80) / CaMLA Speaking (20-25) / CaMLA Writing (30-40) - Total Range (119 - 145)</i> <b>Completion of Intensive Business English 3</b>
-----------------------	--

#### **Key Facts**

<b>Hours (per week)</b>	<b>18 hours per week</b>	<b>Course Features</b>	<b>Language Skill</b> - Reading, Listening - Speaking, Writing - Vocabulary, Presentation
<b>Tuition</b>	<b>\$1,890 / 15 weeks</b>		
<b>Material &amp; Book fee</b>	<b>\$20</b>		

## Academic ESL

### **Academic ESL A / Intensive Speak-out 6 (Level 6)**

Academic ESL and Intensive Speak-out 6 offers nonnative speakers guided practice in academic reading and writing. Students will read critically and write coherently. These courses help academic reading and writing skills through examination of a wide range of reading materials and essay development. Furthermore, these courses offer nonnative speakers guided practice in academic listening, note-taking, class discussions and presentation skills and help to expand students' ability to comprehend to academic lectures and discussions. Further students can develop learners' confidence and fluency.

<b>Pre-requisites</b>	<b>High School Diploma</b> <b>Qualifying score on Placement Test OR</b> - <i>CaMLA EPT(69-80) / CaMLA Speaking (20-25) / CaMLA Writing (30-40) - Total Range (119 - 145)</i> <b>Completion of ESL Level 5</b>
-----------------------	--

#### **Key Facts**

<b>Hours (per week)</b>	<b>18 hours per week</b>	<b>Course Features</b>	<b>Language Skill</b> - Reading, Listening - Grammar, Vocabulary - Speaking / Academic Writing
<b>Tuition</b>	<b>\$1,890 / 15 weeks</b>		
<b>Material &amp; Book fee</b>	<b>\$60</b>		



# TEST PREP



By providing a mirroring environment to that of an actual TOEFL iBT test, AmLotus helps our students to become more confident and achieve higher scores. Our program provides a solid foundation for university entry and maximizes your chances for exam success.

## ibT TOEFL Prep (Level 5)

ibT TOEFL offers students an introduction to the iBT TOEFL exam. Students learn the fundamentals of test-taking, while developing language skills needed to success. This course helps to develop students' ability and confidence in iBT TOEFL test-taking strategies.

<b>Pre-requisites</b>	<b>High School Diploma</b> <b>Qualifying score on Placement Test</b> <i>CaMLA EPT(62-68) / CaMLA Speaking (16-20) / CaMLA Writing (25-30) - Total Range (103 - 118) Completion of ESL Level 4</i>
-----------------------	---

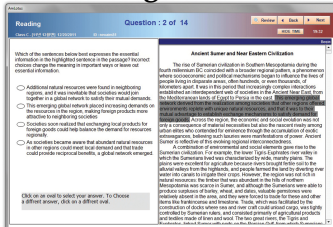
## Master TOEFL Prep (Level 6)

Master TOEFL builds on foundational test taking skills and guides students through the necessary language skills to be successful when taking the TOEFL iBT exam.

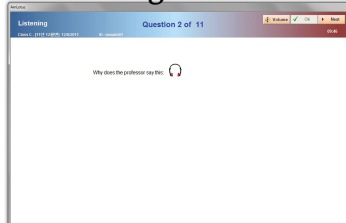
<b>Pre-requisites</b>	<b>High School Diploma</b> <b>Qualifying score on Placement Test</b> <i>CaMLA EPT(69-80) / CaMLA Speaking (20-25) / CaMLA Writing (30-40) - Total Range (119 - 145) Completion of ESL Level 5</i>
-----------------------	---

## AmLotus TOEFL iBT Test Program

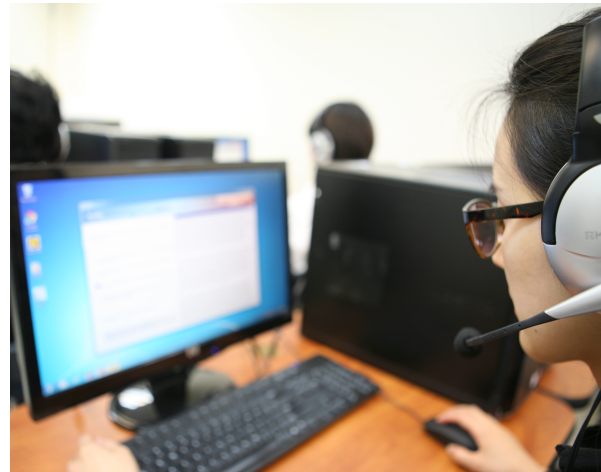
### Reading



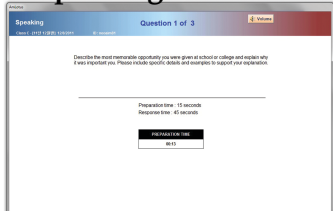
### Listening



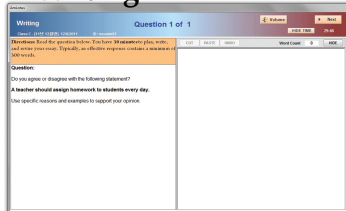
### Daily Computer Tests (R/L/S/W)



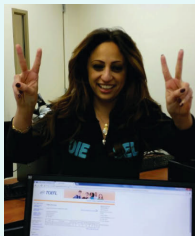
### Speaking



### Writing



## Student Testimonial



### Marriam Mina (Egypt)

I am very happy with the TOEFL instructions provided by AmLotus. I took TOEFL preparation classes, and teachers and administrative members helped me get a score of 102 (Reading: 24, Listening: 25, Speaking: 26, Writing: 27). The classes were very engaging, and teachers taught very helpful strategies. Finally, I got an eligibility to be a pharmacist with that score. Thank you so much, AmLotus!!



## GRE Prep - VR/W (Level 6)

This course is designed to prepare prospective graduate and business school applicants with a variety of educational and cultural backgrounds to master the vocabulary and the writing sections on graduate exams. Students explore a wide variety of test taking strategies.

<b><i>Pre-requisites</i></b>	<b><i>High School Diploma</i></b> <b><i>Qualifying score on Placement Test OR</i></b> - CaMLA EPT(69-80) / CaMLA Speaking (20-25) / CaMLA Writing (30-40) - <b><i>Total Range (119 - 145)</i></b> <b><i>Completion of ESL Level 5</i></b>
------------------------------	--

## IELTS Prep (Level 5)

IELTS prepares participants for all parts of the IELTS exam - the Listening, Reading, Writing and Speaking modules. It focuses on the skills and techniques required to sit for the test by helping them to familiarize with the various test formats and acquire test-taking strategies. The program also prepares students in taking the IELTS by discussing, practicing, and analyzing each section of the test. Students will review particular grammatical patterns that occur regularly on the IELTS and simulate actual test-taking conditions so that they become familiar with and more comfortable with test situations. The goal of this course is to develop students' ability and confidence in IELTS test-taking strategies

<b><i>Pre-requisites</i></b>	<b><i>High School Diploma</i></b> <b><i>Qualifying score on Placement Test OR</i></b> - CaMLA EPT(62-68) / CaMLA Speaking (16-20) / CaMLA Writing (25-30) - <b><i>Total Range (103 - 118)</i></b> <b><i>Completion of ESL Level 4</i></b>
------------------------------	--

### Key Facts

<b><i>Hours (per week)</i></b>	<b><i>18 hours per week</i></b>	<b><i>Course Features</i></b>	<b><i>Language Skill</i></b> - <b><i>Reading, Listening</i></b> - <b><i>Speaking, Writing</i></b> - <b><i>Grammar, Vocabulary</i></b>
<b><i>Tuition</i></b>	<b><i>\$1,890 / 15 weeks</i></b>		
<b><i>Material &amp; Book fee</i></b>	<b><i>\$20</i></b>		

## ENGLISH FOR SPECIFIC PURPOSES (ELECTIVES)

### American Culture E (Level 5)

American Culture offers students an introduction about American cultures and behavior patterns and different aspects of American culture, so the students to be more sensitive to cultural differences and more accepting of them. The goal of this course is to develop students' understanding of life in the United States with particular attention to linguistic nuances, and cultural events.



### Current Events E (Level 5)

Current Event offers students an integrated approach to developing critical thinking skills by exploring controversial issues of international appeal. Also, by using material designed for the native speaker, the selections provide authentic content that is interesting, relevant, and educational, through which students can gain an understanding of American values and attitudes, while developing speaking and writing skills by integrating new information and concepts with previously held opinions. The goal of this course is to develop students' understanding of linguistic structures common in news and media sources.



### English for Digital Marketing E (Level 5)

English For Digital Marketing is designed for students who pursue to develop skills in effectively utilizing digital marketing business and workplace terminology to communicate, orally and in written form, with a wide range of structures and purposes, in a business setting. In this course, students can extract information, ideas and opinions from highly specialized sources within their field. Also, students can identify logical flaws in a presentation or lecture, present a technically complex process in digital marketing, and write a detailed critical review. English for Digital Marketing continues to improve the use of English in the workplace and business environment for advanced students through extensive digital marketing vocabulary development, negotiations and discussions, case study readings, and business correspondence.



### English for American Literature E (Level 5)

This course is designed to sharpen students' reading, speaking, vocabulary, writing and critical thinking skills via stories in the anthology in a variety of themes, literary styles, cultures, and time periods. Students will explore literacy elements such as setting, imagery, and irony with a wide variety of stimulating discussion and writing topics.



### English for Medicine E (Level 5)

This course is designed for advanced ESL or medical candidates to improve their communication skills with patients in English. This course focuses on the language and communication skills that medical field experts need to make consultations more effective through good communications, active listening, voice management, non-verbal communication and cultural awareness.

<b>Pre-requisites</b>	<b>High School Diploma</b> <b>Qualifying score on Placement Test</b> - CaMLA EPT(62-68) / CaMLA Speaking (16-20) / CaMLA Writing (25-30) - <b>Total Range (103 - 118)</b> <b>Completion of ESL Level 4</b>
-----------------------	---

#### ◆ Key Facts

<b>Hours (per week)</b>	<b>18 hours per week</b>	<b>Course Features</b>	<b>Language Skill</b> - <b>Reading, Listening</b> - <b>Speaking, Writing</b> - <b>Vocabulary</b> - <b>Presentation</b>
<b>Tuition</b>	<b>\$1,890 / 15 weeks</b>		
<b>Material &amp; Book fee</b>	<b>\$20</b>		



## Short Program

### Intro to Grammar In Use S – Level 2

This course introduces students communicative activities focused on grammatical structures to take learners from comprehension to communication in English in confidence. Students will develop their ability to understand basic aspects of the grammar through an integrated- skills approach to help them communicate in English in confidence and accuracy.

### Advanced Grammar In Use S - Level 3

Students are further introduced to extensive grammar pedagogy through new and most-updated readings, real and natural language usage, and additional communication activities that encourage collaboration and the application of the target grammar in a variety of settings. Students will further develop their ability to understand comprehensive grammar in a variety of settings through abundant practice, new readings and activities, corpus-informed grammar presentations, and expanded writing practice to help them communicate in English in confidence, accuracy and fluency.

### Intro to Writing S - Level 4

Students are introduced to various genres of essays and basic writing skills needed to succeed in their everyday lives in a variety of settings to empower them to write effectively in different genres. Students will develop their ability to understand American writing skills in a variety of setting and begin to apply knowledge of basic writing skills in American English.

### Advanced Writing S - Level 5

This course is designed to help students master the writing skills that are needed to succeed in their personal lives and professional careers. Students will expand their ability to synthesize comprehensive writing skills, understand texts of different genres, and produce coherent written texts with advanced grammatical forms and structures.

### Accent Reduction S - Level 5

Accent Reduction offers extensive practice in standard American English pronunciation including speech patterns like stress, intonation, and rhythm. Students will develop their phonetic awareness of standard American English.

#### Key Facts

<i>Hours (per week)</i>	<i>18 hours per week</i>	<i>Course Features</i>	<i>Language Skill</i> - <i>Reading, Listening</i> - <i>Speaking, Writing</i> - <i>Vocabulary</i> - <i>Grammar</i>
<i>Tuition</i>	<i>\$610 / 5 weeks</i>		
<i>Material &amp; Book fee</i>	<i>\$20</i>		

# EFL/ESL Teacher Training Program

## TESOL Certificate (Teaching English to Speakers of Other Languages)

### Program Goal

EFL/ESL Teacher training is to provide our students with the highest quality of training and guidance that enables them to seek out teaching opportunities across the globe, or further education.

### Outcomes of EFL/ESL Teacher Training Program: Certificate

At the end of the program, participants will be able to:

- Demonstrate an understanding of how language is learned.
- Identify current language teaching methodologies and their advantages and disadvantages, and effectively apply practices into use.
- Evaluate, select, and use appropriate materials for language skill being taught.
- Create a comfortable learning environment.
- Evaluate own teaching effectiveness.

Course Requirement	<div>1. Associate or higher Degree; the applicant is/was enrolled in 2nd year of college or higher.</div> <div>2. English proficiency is required. For non-English speaker, the applicant must meet one of the following admission requirements;</div> <div>a. Completion of our academic ESL (Level 6) OR</div> <div>b. Submission of one of the official scores - TOEFL iBT: 70, IELTS: 6.0, or TOEIC: 635</div>
--------------------	--

### Key Facts

Hours (per week)	180 (18 hours per week)	Course Features	<div>- Theory and Language Acquisition</div> <div>- ESL Pedagogy and Classroom Management</div> <div>- English Language Teaching Methodology</div> <div>- Class Observation</div> <div>- Practicum &amp; Portfolio</div>
Tuition	\$2,500	Material & Book fee	\$250



**TESOL**  
(Teaching English to  
Speakers of Other  
Language)

# Student Services



## • Orientation

Once students have been admitted, the prospective international students are given a Pre-arrival packet that includes information about academics, lawful immigration procedures and statutes, and life in New York through USPS mail or email.

On-site Student Orientation for all new students is conducted approximately one week prior to the students' first day of class. Based on the individual's academic objectives, the student is offered advice on curriculum and course selection by the Office Manager. The purpose of orientation is to better familiarize students with the school environment and to provide important information necessary for successful course completion. This is also an opportunity for students to ask questions about the school, curriculum, and hand in any final registration documents. Family members are welcome to attend. Digital copies of the Student Handbook are available to all prospective students. Upon request, an admitted student will receive either a digital copy via email, or a printed copy. The Office Manager will review the Handbook with the student and answer any questions the student may have. The student must sign a Handbook Acknowledgement Form acknowledging receipt and comprehension of the information contained in the Student Handbook.

## • Consultative Services

Amlotus has office managers, directors, school agents, and international student advisors (DSOs) available to answer to the questions regarding school and immigration policies and regulations, along with your personal concerns or matters. They are available from 9:30 am to 6:00 pm on Monday through Friday, and can be reached by telephone at (212) 912-0100, or via email at [admission@amlotus.edu](mailto:admission@amlotus.edu). Emails are checked on a daily basis. Students will also be provided academic advising/testing, and advising on college admissions from teachers during the teacher's office hours upon the request.

## • Student IDs

AMLOTUS students will be issued a photo ID upon registration. To request an ID, students should contact the Office Manager as soon as they are registered for classes. Students should carry their IDs with them at all times while in attendance at the school. AMLOTUS student IDs entitle students to any applicable benefits which students receive. Applying for the first student ID card will be at NO cost. If the ID card is lost, each additional ID will cost \$10.00. The student ID entitles the student to discounts with any company that offers discounts to students currently enrolled in school.

## • Lost and Found

All lost and found items are to be reported to Amlotus Agents, and these items will be kept in the "Lost & Found" box. A student should immediately contact an Agent for information if he/she realizes any item has been lost at the school. After 30 calendar days, the school will not be responsible for keeping these items.





### • Student Health Insurance

Amlotus does not provide students with any type of health insurance. We strongly recommend that each student obtain an individual insurance policy in case of illness or emergency. There are serious consequences that can be associated with lack of health insurance. In the United States, medical care is not free, and the U.S government does not offer it at a low cost. Therefore, in any emergency or catastrophic care, medical care services can be very expensive, which can jeopardize a student's ability to maintain financial obligations and consequently affect a student's ability to maintain a full-time status, which is required by DHS immigration regulations. Amlotus is not responsible for any students incurred by illness, accident, or emergency medical treatment.

During Orientation, each student will be given a referral list which will contain the names and addresses of places where he/she might be able to obtain health insurance. If a student needs additional referrals, the Office Manager will be glad to assist the student with that.

### • Student Housing

At the time of this publication, AMLOTUS does not supply student housing. However, students may contact an AMLOTUS Agent to find out about NYC housing information, such as related websites, etc.

### • Student Records Keeping Period

Student Enrollment Agreements and payment records shall be kept on site for a maximum of 7 years. After seven years, the records may be moved off-site, but students will still be available for a maximum of 20 years. Students may request records at any time within the given time period.

### • Transcripts for Students

Within 20 years of the date of his/her graduation, a student may request that Amlotus supply an official (sealed) or non-official transcript. A Transcript Request Form must be completed by the student. There is a \$10 charge for each transcript.

### • Field Trip

Amlotus schedules field trips for students in each ESL course. The instructor plans these trips, and the students get exposure to different activities. If fees are required, students are informed in advance of the fees required and responsible for any cost related to field trips. Students also should review rules of safety below with their instructor before leaving the campus.





Scan for more  
information  
about  
AmLotus!

**Hours of School Operation:**

8:00 a.m. – 9:00 p.m. (M to F) / 9:00 a.m. – 6:30 p.m. (Sat., Sun)



***A Premier Private Language School***

500 8th Ave. Suite 909, New York, NY 10018

Tel: 1-212-912-0100 / Email: [admission@amlotus.edu](mailto:admission@amlotus.edu)

[www.amlotus.edu](http://www.amlotus.edu)

